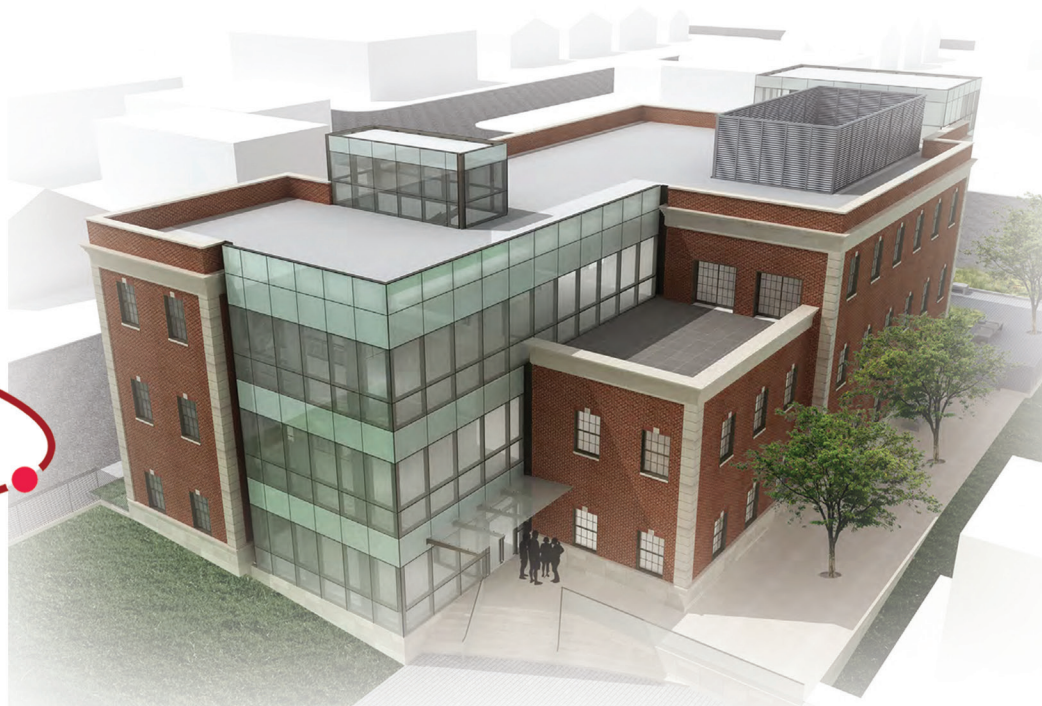


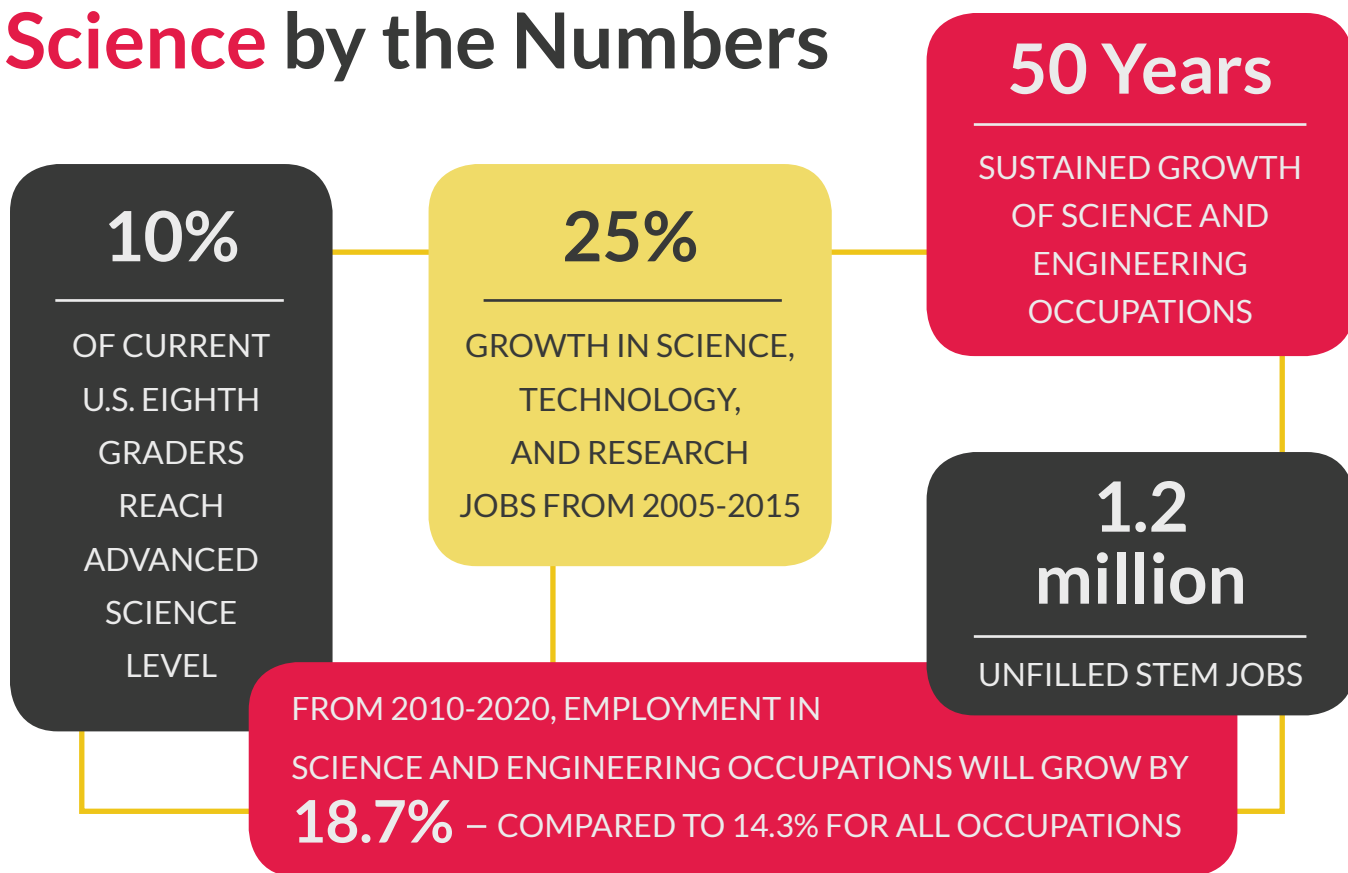


EMPOWERING OUR STUDENTS ENDOWING OUR FUTURE

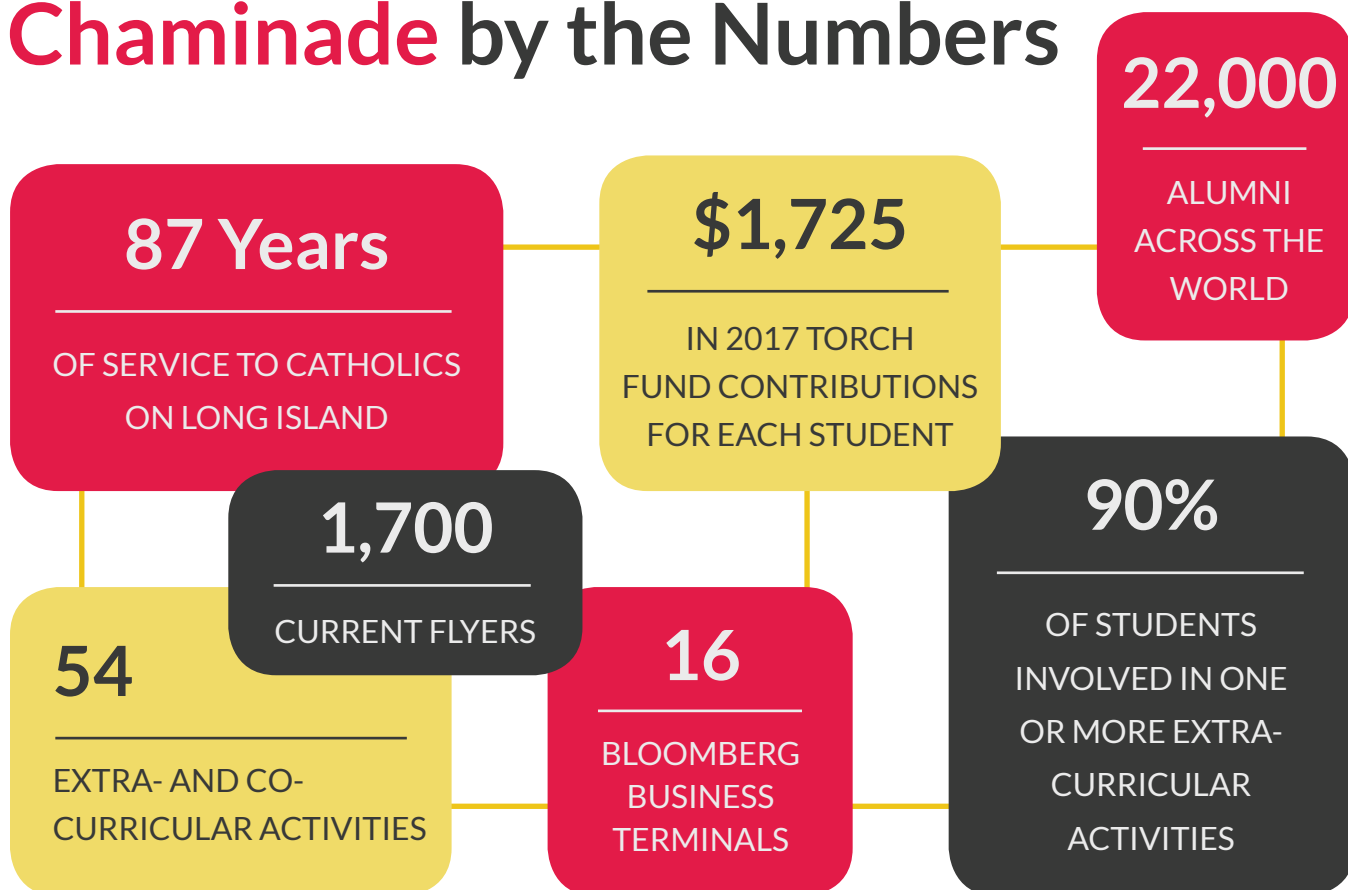
One Family. One Mission.



Science by the Numbers



Chaminade by the Numbers





Dear Chaminade Family,

During his ministry, Blessed William Joseph Chaminade advised his community that, “New times call for new methods.” Post-revolutionary France was a different place than the one he fled under exile; the Church needed to adapt. That spirit – staying true to our mission while taking on new and effective methods – has served as a guiding principle of the Marianists for 200 years. That spirit has inspired the *Empowering Our Students, Endowing Our Future* comprehensive campaign.

This campaign refocuses everything we do on our one mission – to form young men through the best Catholic education possible at the most affordable price. The Torch Fund and the Science, Technology, and Research Center are two projects which help make that happen. After careful consideration, we have decided to combine our 2018 Torch Fund activities with our capital efforts for the Science, Technology, and Research Center. It’s a new method for a new time – rooted in tradition, growing in innovation.

Over the years, we have incorporated many new methods to empower and inspire students. When rising costs faced the school and its families, the Torch Fund was born. Through the generosity and dedication of the Chaminade Family, the Torch Fund has grown every year for 30 years. Over the last 15 years, classroom chalkboards and overhead projectors gave way to Visualizers, Bloomberg business terminals, and AppleTVs and iPads. Along with the technology, we are examining and enhancing every element of our curriculum. New courses like coding, SAT/ACT prep, and Bloomberg financial build up our already robust academic program.

The Science, Technology, and Research Center is the landmark next step for our students. A strong foundation in science, technology, and research is of the utmost importance in today’s workforce. Our current facilities simply cannot be retrofitted to meet that need. Nationwide, U.S. students are lagging behind. The tools in the Science, Technology, and Research Center will empower Chaminade men to buck that trend.

Empowering Our Students, Endowing Our Future invites us to look to the future in faith as one family with one mission. This campaign will guarantee \$2 million to the annual Torch appeal for 2018 only. All funds received after we fund Torch for 2018 will fund the Science, Technology, and Research Center. In 2019 and beyond, we will once again invite the Chaminade Family to support the Torch Fund as a separate annual appeal. Keep this mind as you discern your support for this campaign.

Together, Torch and the science center support our mission to send well-rounded men of faith and intellect into the world as leaders. Join us as we heed Fr. Chaminade’s admonition: “New times call for new methods.” Thank you for your continued generosity, and for partnering with us in our mission of education.

Fortes in Unitate,

Bro. Thomas J. Cleary, S.M. '81
President, Chaminade High School



One Family, One Mission

Families choose Chaminade because it gives a complete education of the mind, body, and spirit while also keeping costs as affordable as possible. That's what *Empowering Our Students, Endowing Our Future* is all about. The Science, Technology, and Research Center and the Torch Fund both work toward that objective. Coupling the two initiatives offers us a unique opportunity to focus our efforts on the entire Chaminade experience we offer our students. *Empowering Our Students, Endowing Our Future* responds to a critical need today. It is rooted in tradition and grows with innovation.

Keep the Torch Burning

The Torch Fund is Chaminade's endowment. This endowment was designed to endure and produce a steady stream of investment income every year. The revenue it generates supplements the school's operating budget so that Chaminade can charge the lowest possible tuition fees. In essence, the Torch Fund's annual earnings are given to the young men of Chaminade and their families in the form of tuition abatement.

Every year, Chaminade has invited its alumni, parents, parents of alumni, family, and friends to make a gift to the Torch Fund. Every year, the Chaminade Family has answered this call generously. During its first year in 1987, the Torch Fund assisted families with tuition by \$40 per student. For the 2017-18 school year, that number has climbed to \$1,725 per student! Since its inception, the Torch Fund has lowered costs to families by more than \$33 million!

As the cost of living on Long Island continues to rise faster than household income, Chaminade is more committed than ever to Torch's mission – making a Chaminade education affordable for every family. *Empowering Our Students, Endowing Our Future* ensures that the Torch Fund will continue to grow while also funding the Science, Technology, and Research Center.

Raising the Bar

A strong foundation in the applied sciences, technology, engineering, and math (STEM) is becoming even more important than ever before for our students. The base we give them in high school will allow them to excel in collegiate science courses. That, in turn, will empower them to compete for science, technology, engineering, and math jobs in an expanding market. From 2005 to 2015, the number of STEM jobs grew six-times faster than the average of all other job markets. By 2018, nearly 1.2 million STEM jobs will go unfilled in the United States due to lack of qualified domestic workers. We need to empower our students to seize these opportunities.

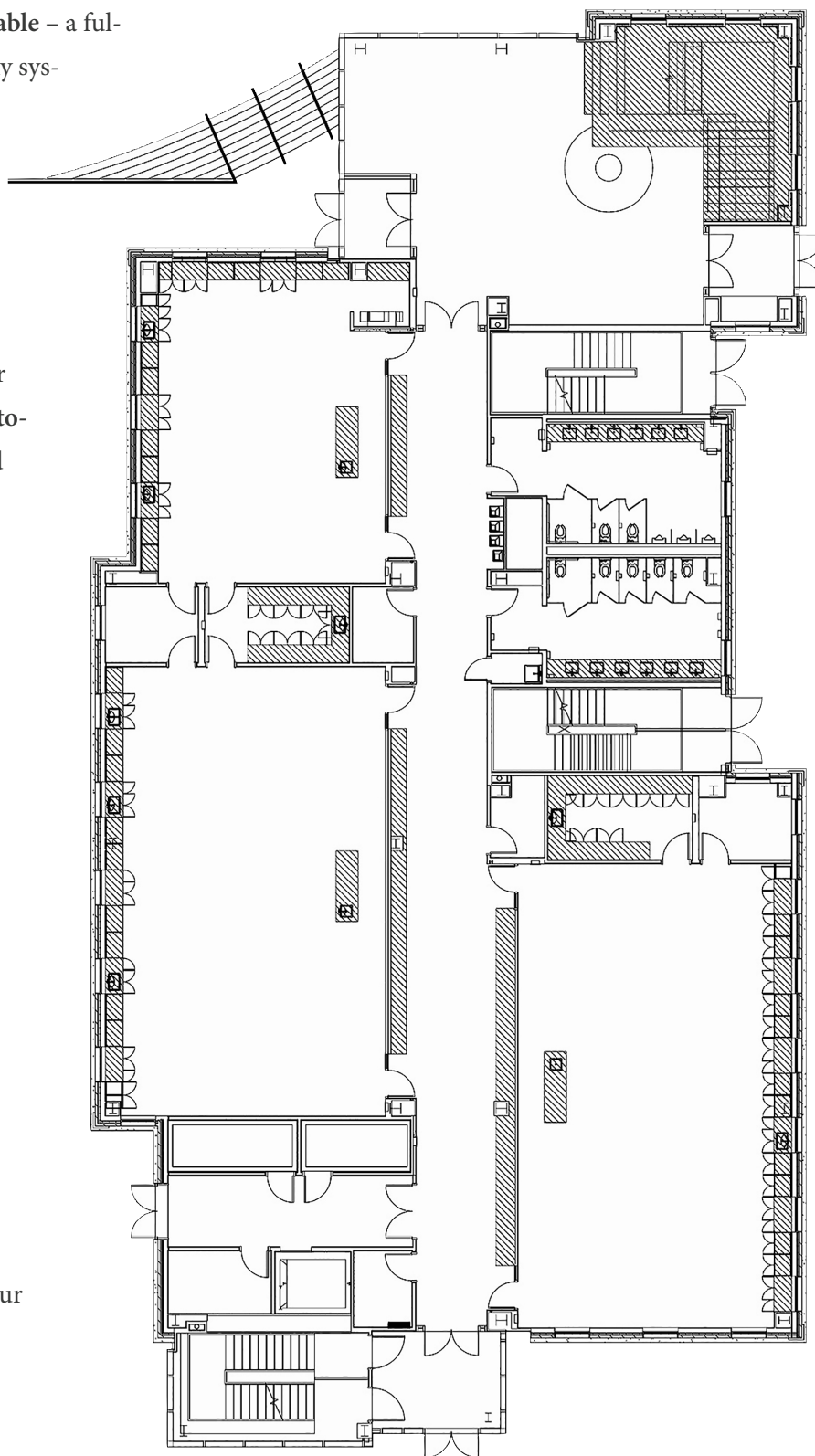
Our current science facilities are antiquated and could not be retrofitted effectively, so we broke ground on the 34,000 square-foot Science, Technology, and Research Center. Its computers, instruments, and facilities will significantly expand the field of study we offer our students and create new opportunities for partnerships, internships, and advanced study.

The science center will house four teaching labs for **geosciences**, **biology**, **chemistry**, and **physics**, as well as three additional labs for **research**, the **Science Olympiad**, and **fabrication and robotics**. These labs are much larger, accommodating students and equipment with an optimal teaching layout and plenty of space to work.

The **Fabrication Lab** will house 3D scanners, 3D printers, metal-working tools, and at least three Auto-CAD-equipped computer workstations. All other labs will feature interactive, back-projected teaching walls. Throughout the building, students will make use of highly precise **computerized lab probes** feeding real-time data to their iPads for group analysis. **Laminar flow cabinets** and **incubators** found in the **Research Lab** will provide completely sterile environments for cell-culturing. Students will explore the fundamentals of drug development, DNA and gene analysis, and forensics with **DNA amplification and sequencing technology** here. The **Biology Lab** will house a medical-school grade **Anatome Digital Anatomy Table** – a fully-segmented, real human, 3D anatomy system. The **Chemistry Lab**, with its new **glassware** and **fume hoods**, will allow for experiments in acid-base titrations, redox reactions, and metal replacement reactions.

From Ott Field, students will enter the **atrium**, which will feature **three-story exterior glass walls**, an unanchored floating staircase, a Foucault pendulum, and “living walls” of perfectly preserved plants, mosses, and lichens. On the third floor, our **exhibits and events space** will house cutting-edge oceanographic equipment, such as a **multipurpose teaching flume**, a **sediment transport channel**, and a **drainage and seepage tank** for advanced study of aquifers. Atop the building, a **green roof** will curtail runoff, shade the building from direct sunlight, and insulate the building from heat loss. The **observation deck** will provide space for climate and solar study, and an **observatory dome** will hold a powerful **telescope** for instruction in astronomy.

For a complete virtual tour, visit our comprehensive campaign webpage at www.chaminade-hs.org/empowering.



One Future Together

Empowering Our Students, Endowing Our Future is an opportunity for us to refocus on our mission – forming young men with the best Catholic education possible at the most affordable price. This comprehensive campaign will fund two of the most important expressions of that mission – the Torch Fund and the Science, Technology, and Research Center.

EMPOWERING OUR STUDENTS,
ENDOWING OUR FUTURE
CAMPAIGN GOAL:

— **\$20 million** —

FULLY FUND TORCH FOR \$2 MILLION

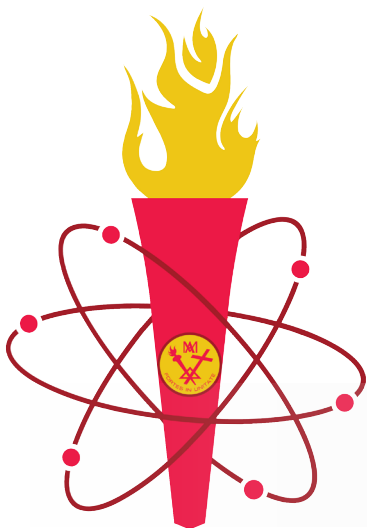
OFFSET SCIENCE CENTER COSTS
BY AT LEAST \$18 MILLION

We have established a goal of \$20 million for this campaign. *Empowering Our Students, Endowing Our Future* will guarantee \$2 million to the 2018 annual Torch appeal. It does not guarantee any funding to Torch in 2019 or 2020. All funds received after the first \$2 million will fund the Science, Technology, and Research Center. When we reach our goal, that contribution to the science center will come to \$18 million.

Funding for the 2018 Torch Fund	\$2 million
Funding for the science center	\$18 million
<hr/>	
Total <i>Empowering our Students, Endowing our Future</i> Goal	\$20 million

The Torch Fund provides interest earnings to offset our operating costs and keep tuition affordable in the future. The mission and purpose of Torch continues in perpetuity. Therefore, we will continue to fundraise for the Torch Fund as usual, through separate annual appeals, in 2019 and beyond. Multi-year pledges to *Empowering Our Students, Endowing Our Future* will not support Torch in later years – but rather for the 2018 year only. Please anticipate our invitation to participate in future years of the Torch Fund as you budget a multi-year pledge to this campaign.

Our goal of \$20 million is an ambitious one! The \$18 million it would provide for the science center would leave a manageable \$5 million in construction costs for the school to cover through its operating budget.



If we were to raise \$25 million, we would fully fund both the 2018 Torch Fund for \$2 million and the Science, Technology, and Research Center for \$23 million.

If we raise more than \$25 million, all funds raised over and above that amount will be invested into the Torch Fund endowment. Over time, these funds will grow and earn interest to fund a bright future for Flyers for years to come.

In Their Own Words

Members of the Chaminade Family explain how they see *Empowering Our Students, Endowing Our Future* making a difference in our shared mission.



Pick any day of the week, and **Nicholas Plante's** won't end at the dismissal bell. The Chaminade senior holds leadership roles in the school newspaper,

Tarmac, and the Science Olympiad. Two of more than 50 extra-curricular activities at Chaminade, they may appear to be at opposite ends of the spectrum. Not so for Nick.

The balance of his responsibilities as *Tarmac* editor-in-chief and Science Olympiad co-president meet one purpose for Nick: "To spread the Word of God through all that we do, leaving a positive mark everywhere we go. The Chaminade Family's constant support helps us reach our full potential."

This reporter has noticed a palpable energy over the new Science, Technology, and Research Center.

"Practically every day in class and throughout the hallways, people are talking and asking questions about the building,"

Nick said. "I've even heard classmates ask teachers, 'can't we just go over there already?!'"

He's one of them, too. "A big challenge I've come across in my time with Olympiad is that we've lacked the best resources that some of our competitors have. I learn better through actual experiences, and we can absorb so much more with our new space and equipment.

"Nothing in the science center will go unused — we are going to make the most of it. And if anyone needs me after school when it opens, you'll know where to look."



At the intersection of technology and economics, you'll find **Justin Tamayo** '13 plotting the roadmap to his future. The Georgia Institute

of Technology masters student is majoring in computer engineering; Wall Street is his intended destination. Financial technology, or "fintech" as it's known, protects and

enables global financial transactions. Just think about how often you used an ATM or bank card, checked your account balance on your phone or used a computer to manage your assets.

"This is a very unique field," Tamayo said. "What differentiates one company from the rest is how firms integrate the latest technology — and leveraging that while still valuing excellent people skills, expanding close relationships with clients, and understanding and addressing their needs."

That's why Tamayo holds the Chaminade program, and the Science, Technology, and

Research Center, with such importance.

"I think a lot of students have a technological bend — it's a talent they may not have known was there, waiting to be discovered."

Tamayo, who was a Speech and Debate team member in his high-school days, reflected, "Everything that happens at Chaminade has a purpose. I'm excited about the opportunities future Chaminade students will have, and the complete education the school provides. The entire Chaminade Family has a role in that, especially through projects like this."



When Science Department chairman **Bro. Benjamin Knapp, S.M.** was a Chaminade student, the school's labs didn't look much differently than

they do now. He graduated in 1993.

"That was around the time of the last major upgrade to the labs," Bro. Ben said. "But, science continues to advance — perhaps even faster now."

A physics teacher today, Bro. Ben believes the Science, Technology, and Research Center is an asset that will benefit all Chaminade men, regardless of their particular interests. He explained, "Every single student will use the equipment we'll have — the kind they'd encounter at many colleges. These tools can electronically transmit data from experiments directly to students' iPads, allowing them to collect more information and do more with it. During lab time, our men won't just be learning science, they'll be doing science."

Students will likely be "doing science" in some form after joining the workforce, as

well. "It's not even a question now whether or not businesses, big or small, are using technology. To stay relevant in today's world, they have to."

Bro. Ben's graduating class was one of the first to watch the Torch Fund begin and grow. Now, he looks to the science center as the next phase of Chaminade's growth. "It's important for our students to pursue all of their passions," he said. "We want our boys to leave here as well-rounded men. The generosity and support of the Chaminade Family makes it possible."

Memorial Offerings

Memorial offerings in the new Science, Technology, and Research Center present a rare opportunity for members of the Chaminade Family to honor a beloved spouse, parent, child, teacher, or friend through a lasting, permanent tribute on Chaminade's campus. The value of a memorial is not fixed by actual cost, but by privilege of designation. They are priced according to their positions of prominence, visibility, and prestige – not the cost of installation and materials. When this brochure was printed in the fall of 2017, the following memorials were still available. Check our campaign website for up-to-date memorial offerings. Contact our Development Office to reserve a memorial.

SPECIAL OPPORTUNITIES	Religious images in every room	\$150,000
CORNERSTONE GIFTS	Southwest cornerstone	\$1,000,000
	Northwest cornerstone	\$1,000,000
	Northeast cornerstone	\$1,000,000
ATRIUM	Atrium memorialization	\$1,000,000
	Floating staircase	\$350,000
SCIENCE OLYMPIAD LAB	Science Olympiad lab teaching wall	\$125,000
	Science Olympiad computerized lab probes	\$35,000
EARTH SCIENCE LAB	Earth Science lab teaching wall	\$150,000
	Earth Science computerized lab probes	\$125,000
PHYSICS LAB	Physics computerized lab probes	\$225,000
COLLABORATIVE WORKSPACE	Third floor south landing collaborative work space	\$100,000
RESEARCH LAB	DNA sequencer	\$300,000
	DNA (PCR) amplifier	\$250,000
	Research lab teaching wall	\$125,000
	Research lab laminar flow cabinet and ventilation system	\$100,000
	Research computerized lab probes	\$50,000
CHEMISTRY LAB	Chemistry lab teaching wall	\$150,000
	Chemistry lab ventilation system and fume hoods	\$125,000
	Chemistry computerized lab probes	\$100,000
BIOLOGY LAB	Biology lab memorialization	\$650,000
	Anatome table	\$250,000
	Biology lab teaching wall	\$150,000
	Biology lab ventilation system and fume hoods	\$125,000
	Biology computerized lab probes	\$100,000
HYDRODYNAMICS SIMULATORS	4-Meter mobile bed and flow visualization tank	\$150,000
	Teaching flume with complete fluid dynamics model	\$75,000
	Sediment transport demonstration channel	\$60,000
	Drainage and seepage tank	\$50,000
	River flow demonstrator	\$35,000
	Drain permeameter and hydraulics bench	\$35,000
FAB LAB	Custom furnishings	\$100,000
	Laser cutter	\$75,000
	3D printer and 3D scanner	\$50,000
	Metal-working lathes and mills	\$35,000

Gift Recognition

Gratitude is an integral part of Christian discipleship. As a sign of this gratitude, Chaminade High School is committed to publicly thanking generous donors through a permanent installation in the new Science, Technology, and Research Center. Donors who have given to the *Empowering Our Students, Endowing Our Future* campaign (or who have made previous gifts for the science center) will be recognized according to the following levels:

OUR LADY OF THE PILLAR CORNERSTONES

In Saragossa, Spain, Our Lady of the Pillar guided Blessed Father Chaminade as he discerned his call to found the Society of Mary. Named in her honor, this level recognizes all donors who contribute amounts of **\$1 million or more**.

BLESSED FATHER CHAMINADE FOUNDERS

Named in honor of the founder of the Marianist order, our school's namesake, this level recognizes all donors who contribute amounts of **\$500,000 to \$999,999**.

LEADERSHIP PARTNERS

This level recognizes the exceptional leadership of those who have partnered with Chaminade in *Empowering Our Students, Endowing Our Future* through contributions of **\$250,000 to \$499,999**.

VISIONARIES

This level recognizes the vision and generosity of all those who contribute amounts of **\$100,000 to \$249,999**.

CHAMPIONS

This level recognizes all donors who have championed the cause of exceptional, affordable Catholic education at Chaminade through contributions in the range of **\$50,000 to \$99,999**.

PATRONS

This level recognizes the generous patronage of members of the Chaminade Family who have contributed **\$25,000 to \$49,999**.

BENEFACTORS

This level recognizes our generous benefactors whose contributions to *Empowering Our Students, Endowing Our Future* fall from **\$10,000 to \$24,999**.

INNOVATORS

This level recognizes members of the Chaminde Family whose support of innovation in education falls in the range of **\$5,000 to \$9,999**.

STEWARDS

This level recognizes all those families whose generous financial stewardship will empower our students and endow a bright future for the Flyers. The pledges recognized at this level fall in the range of **\$3,000 to \$4,999**.

Suggested Giving Plans

The Chaminade Family Looks to the Future

The Chaminade Family faces a challenge that we can only overcome together. Through this comprehensive campaign, we hope to raise a minimum of \$20 million. We believe that this goal is not only attainable, but surpassable. The more we raise now, the less the school will need to finance from its operating budget moving forward. If we exceed \$25 million, we will fully fund both the 2018 Torch Fund and the Science, Technology, and Research Center. It is only by your generosity that we will be able to accomplish this!

In order to assist you as you consider your pledge, we have provided some suggested giving plans. **Remember, this campaign is based on equal sacrifice – not equal giving.** Each individual or family has different financial obligations and abilities. Even so, one of these plans should fit within your monthly budget. This may be the best guideline for your commitment.

Total Pledge	10% Down Payment	3 Annual Payments	12 Quarterly Payments	36 Monthly Payments
\$100,000	\$10,000	\$30,000	\$7,500	\$2,500
\$50,000	\$5,000	\$15,000	\$3,750	\$1,250
\$25,000	\$2,500	\$7,500	\$1,875	\$625
\$15,000	\$1,500	\$4,500	\$1,125	\$375
\$10,000	\$1,000	\$3,000	\$750	\$250
\$7,500	\$750	\$2,250	\$563	\$188
\$5,000	\$500	\$1,500	\$375	\$125
\$3,000	\$300	\$900	\$225	\$75

Your Commitment

We are inviting each household in the Chaminade Family to consider a pledge of \$3,000 payable over the next three years. Following a 10% down payment, this would be a sacrifice of a \$75 per month – \$2.50 a day – for the Flyers of tomorrow. This amount is comparable to a single monthly cell phone bill, or what you might pay each day for a cup of coffee. As you discern your pledge amount, please consider the following:

- Your commitment may be paid over a three-year (36-month) period.
- Approximately 60 days after we receive your pledge card, we will begin mailing payment reminders in accordance with your payment preferences.
- *Empowering Our Students, Endowing Our Future* is a special project that requires funding over and above our current annual revenue streams. Pledges to this campaign fund the Torch Fund for this year only. This campaign does not fund Torch in 2019 or 2020. As you budget your pledge, please anticipate that we will invite you to participate in the Torch Fund next year and the year after as you support *Empowering Our Students, Endowing our Future*.

A Heartfelt Appeal

Chaminade makes a heartfelt appeal to alumni, parents, alumni parents, and friends to reflect on their ability to make an even more generous pledge to this campaign. **We ask that those who are capable of making pledges of \$10,000, \$25,000, \$50,000, or more help lay a foundation for the success of this campaign.**

Suggested Giving Plans

Tax Advantages of Thoughtful Giving

- **Tax Deductions.** Annual contributions to this campaign are fully tax-deductible.
- **IRA Charitable Rollover.** If you have an IRA and are aged 70½ or older, you must take a required minimum distribution (RMD) every year. Alternatively, you may opt to make a qualified charitable distribution (QCD). Through a QCD, you may transfer up to \$100,000 per year to Chaminade High School. As a charitable gift, this distribution comes straight from your IRA to Chaminade. It does not pass through your hands; it is not taxed as income, but it does count toward your annual RMD.
- **Appreciated Stock or Securities.** If you have held stock for one year or more and then give that stock to a charitable institution, you are allowed to take a tax deduction for its current market value. In this scenario, neither you nor Chaminade has to pay capital-gains tax when the stock is sold. This results both in a bigger deduction for you and a larger gift to Chaminade. To make a gift of stock, please instruct your financial advisor to contact the Chaminade High School Office of Development and Alumni Relations at (516) 742-5555, ext. 444.

Matching Gift Opportunities

Many employers have matching gift programs that provide employees and retirees the opportunity to multiply their gifts to educational institutions. We encourage all members of the Chaminade Family to inquire with their human resources departments about matching gift opportunities that may be available to them. Our Development Office is happy to assist you in providing the requisite documentation.

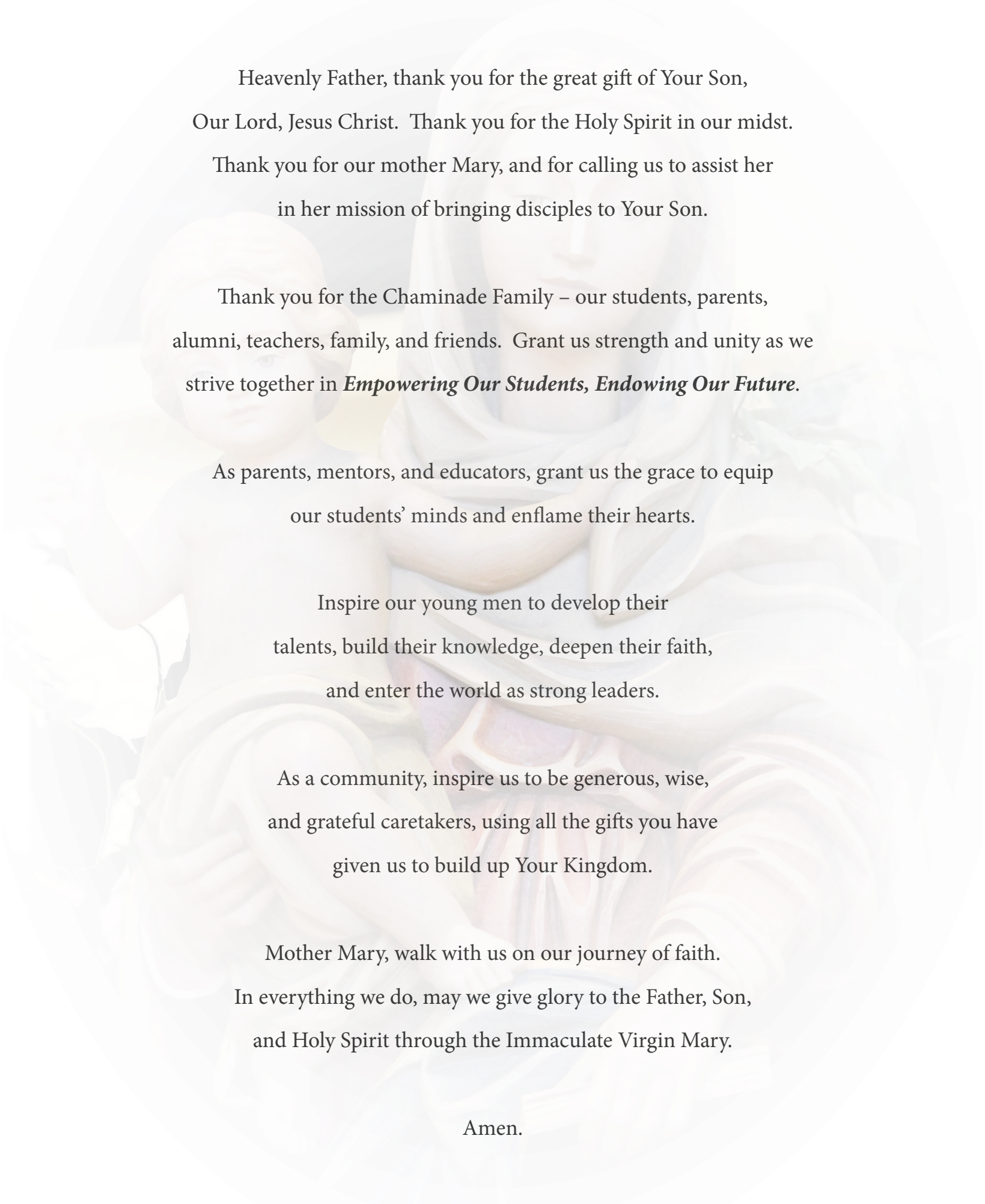
Planned Giving

Planned gifts provide alumni, family, and friends with alternate, often tax-advantageous ways to make gifts to Chaminade High School. Please consider:

- **Bequests** to non-profit institutions are exempt from estate taxation. Gifts may be made in specified dollar amounts or as a percentage of an estate. It is possible to bequest cash, real estate, stocks, bonds, coins, etc.
- **Charitable Remainder Trusts** can be tailored to the specific needs of the donor. A charitable remainder annuity trust (CRAT) pays the beneficiaries a fixed dollar amount, either for life or for a period of time. A charitable remainder unitrust (CRUT), on the other hand, is designed to pay the beneficiaries of the trust a set percentage of the trust's principal each year for life or for a period of years.
- **Retirement Plan Benefits.** Retirement income that is not distributed to the plan's owner during his/her lifetime may be subject to both estate tax and income tax at death. To avoid this "double jeopardy," consider gifting these assets to Chaminade. Simply list Chaminade High School as the beneficiary or contingent beneficiary of all or part of your IRA or retirement plan benefits.
- **Life Insurance Policies.** Many donors have paid for policies that are no longer necessary for lifestyle protection. In this case, such a policy can be donated for the cash or surrender value of the policy.

Making Your Pledge

A volunteer may contact you in the coming weeks to solicit your participation. As the campaign progresses, pledge cards will be mailed to members of the Chaminade Family. You may drop off your completed pledge card with the school receptionist, or you may mail it to: **Chaminade High School Development Fund | Attn: Empowering Our Students, Endowing Our Future, 340 Jackson Avenue, Mineola, NY 11501.** You may also make a pledge online at www.chaminade-hs.org/empowering. If you have any questions, you may contact our Development Office at (516) 742-5555, ext. 444.



Heavenly Father, thank you for the great gift of Your Son,
Our Lord, Jesus Christ. Thank you for the Holy Spirit in our midst.
Thank you for our mother Mary, and for calling us to assist her
in her mission of bringing disciples to Your Son.

Thank you for the Chaminade Family – our students, parents,
alumni, teachers, family, and friends. Grant us strength and unity as we
strive together in *Empowering Our Students, Endowing Our Future*.

As parents, mentors, and educators, grant us the grace to equip
our students' minds and enflame their hearts.

Inspire our young men to develop their
talents, build their knowledge, deepen their faith,
and enter the world as strong leaders.

As a community, inspire us to be generous, wise,
and grateful caretakers, using all the gifts you have
given us to build up Your Kingdom.

Mother Mary, walk with us on our journey of faith.
In everything we do, may we give glory to the Father, Son,
and Holy Spirit through the Immaculate Virgin Mary.

Amen.